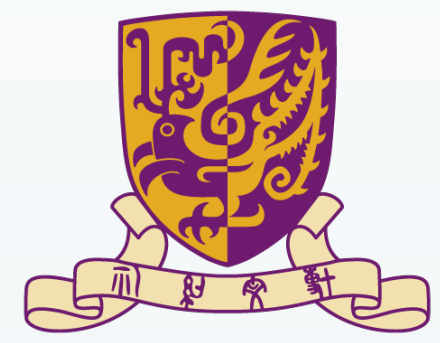


Acquisition of nonmanual adverbials in Hong Kong Sign Language (HKSL) by deaf children in the Jockey Club Sign Bilingualism and Co-enrolment in Deaf Education Programme

Jia Li, Scholastica Lam, and Cat H-M. Fung

Centre for Sign Linguistics and Deaf Studies, The Chinese University of Hong Kong

捐助機構 Funded by:



香港中文大學
The Chinese University of Hong Kong

lijia_cslds@cuhk.edu.hk
schola_cslds@cuhk.edu.hk
cat_cslds@cuhk.edu.hk



賽馬會手語雙語共融教育計劃
JOCKEY CLUB SIGN BILINGUALISM AND
CO-ENROLMENT IN DEAF EDUCATION PROGRAMME



香港賽馬會慈善信託基金
The Hong Kong Jockey Club Charities Trust

Nonmanual adverbials (NMA)

- ✓ Co-occur with manual predicates
 - ✓ Carry adverbial information
 - ✓ Spread over signs they modify
- (Liddell, 1980; Neidle et al., 2000)

Previous acquisition studies

Data: Naturalistic; Elicited (sentence repetition)

Subjects: DD with ASL as their native language

Findings:

- NMA are acquired independently from the manual predicates they modify.
 - ✓ DD initially produce bare manual predicates before adding the co-occurring facial morphology
 - ✓ DD mastered and used a broad range of adverbials by the age of 3;6
- DD acquired free lexical adverbials (e.g. GOOD, YUCKY) before bound NMA (e.g. “th”, “mm”).

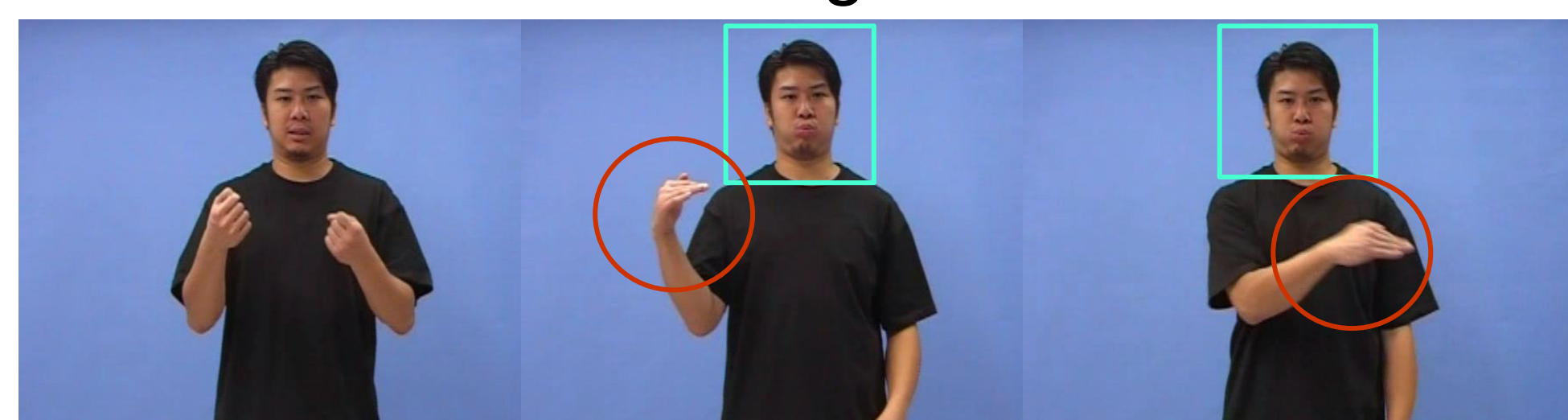
(Anderson & Reilly, 1999; Reilly & Anderson, 2002; Reilly, 2006)

NMA in HKSL

E.g. ‘A car goes quickly’.

go+CL_sem:car

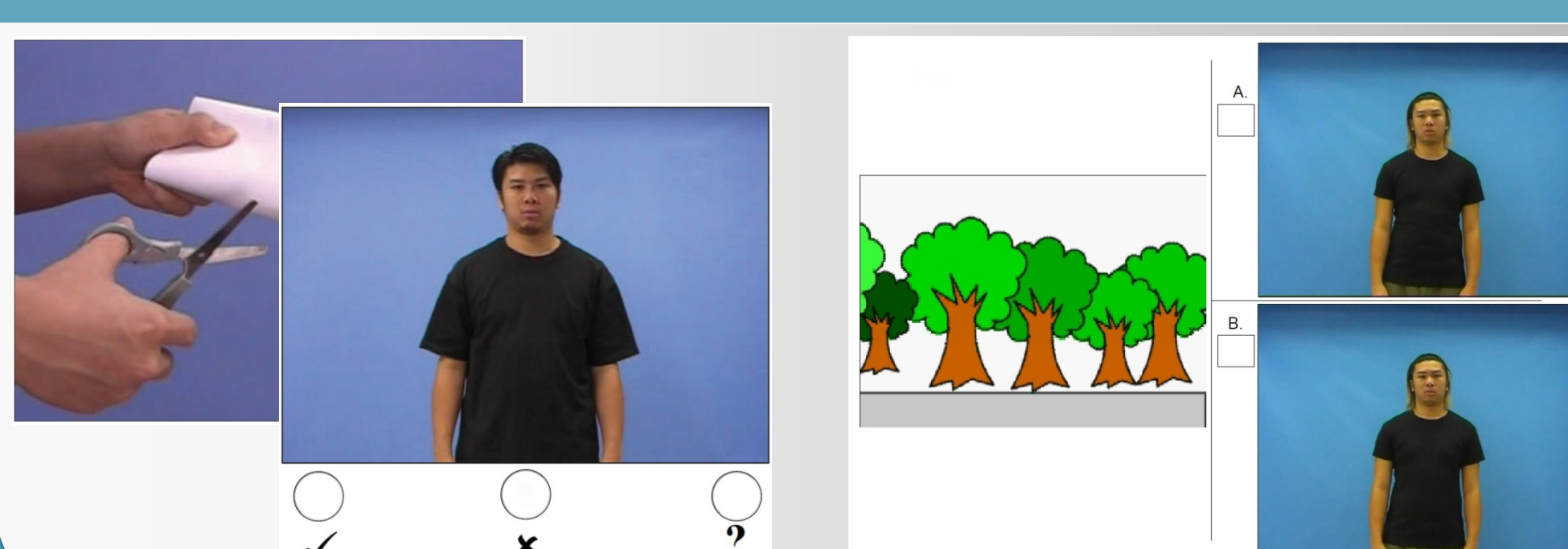
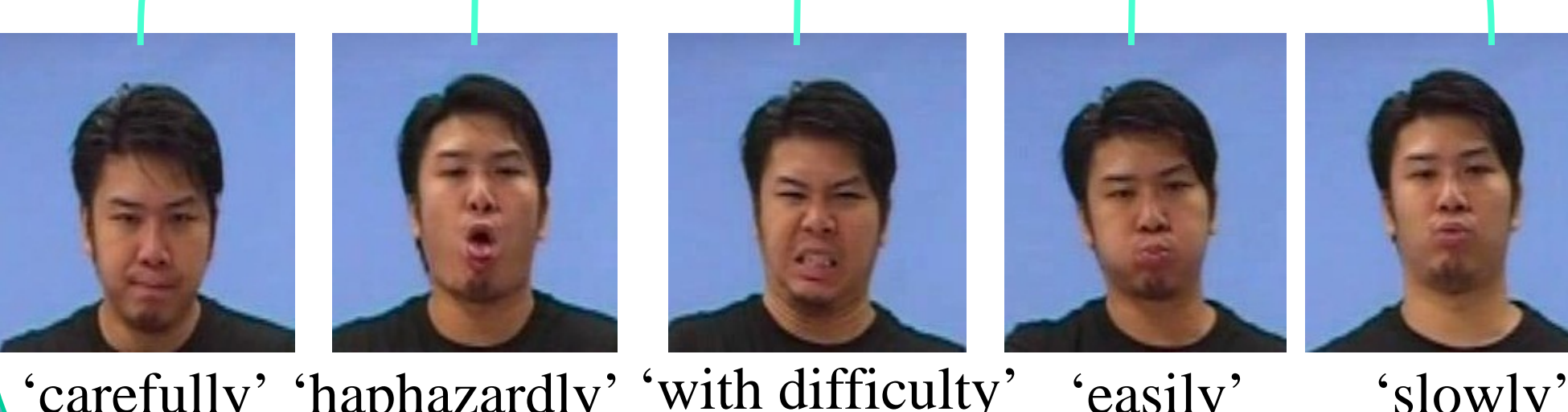
CAR



Marking manners

Modulated Manual Predicate

NMA



Grammaticality judgment

Video-signing matching

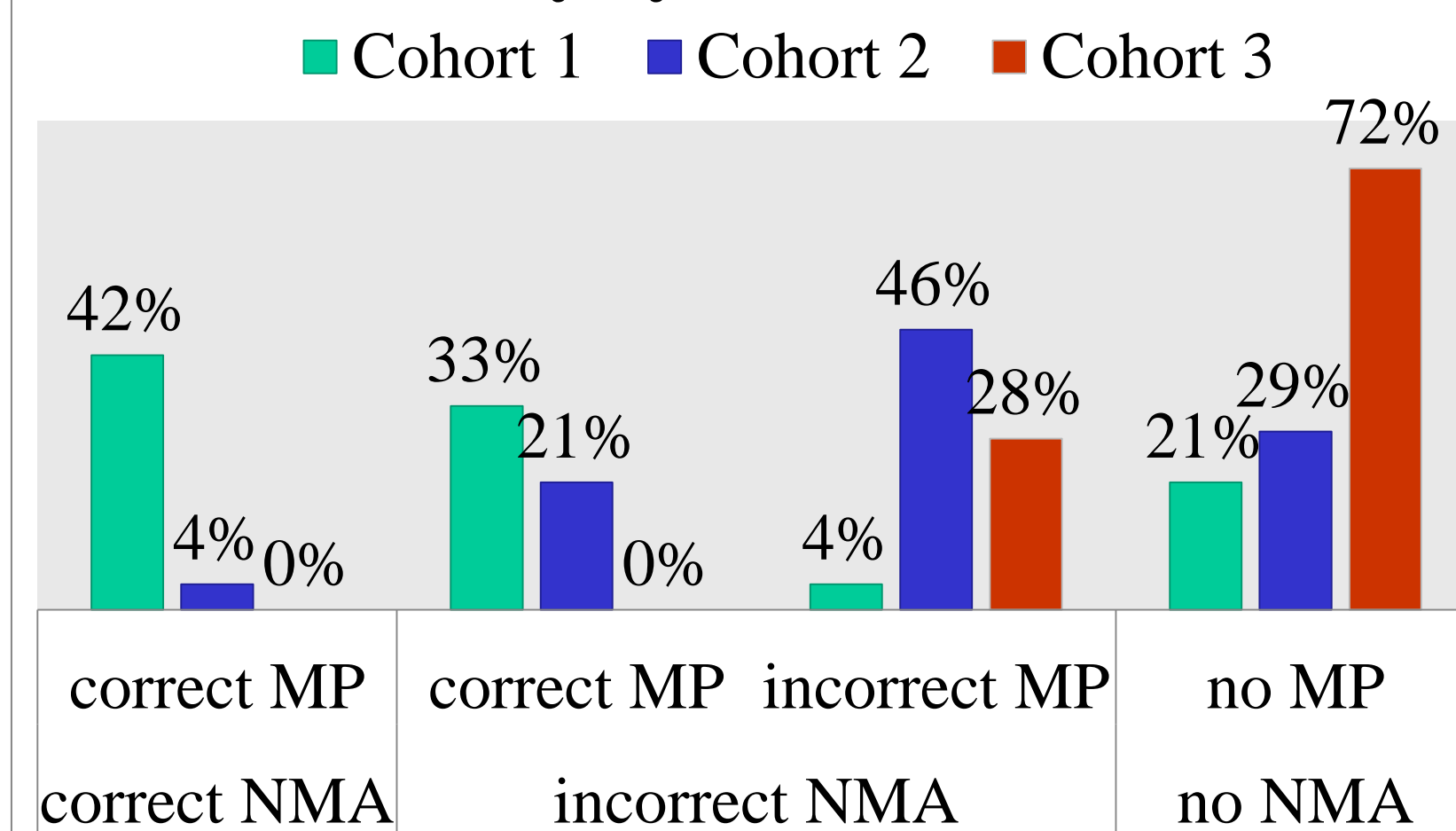
Comprehension

Production

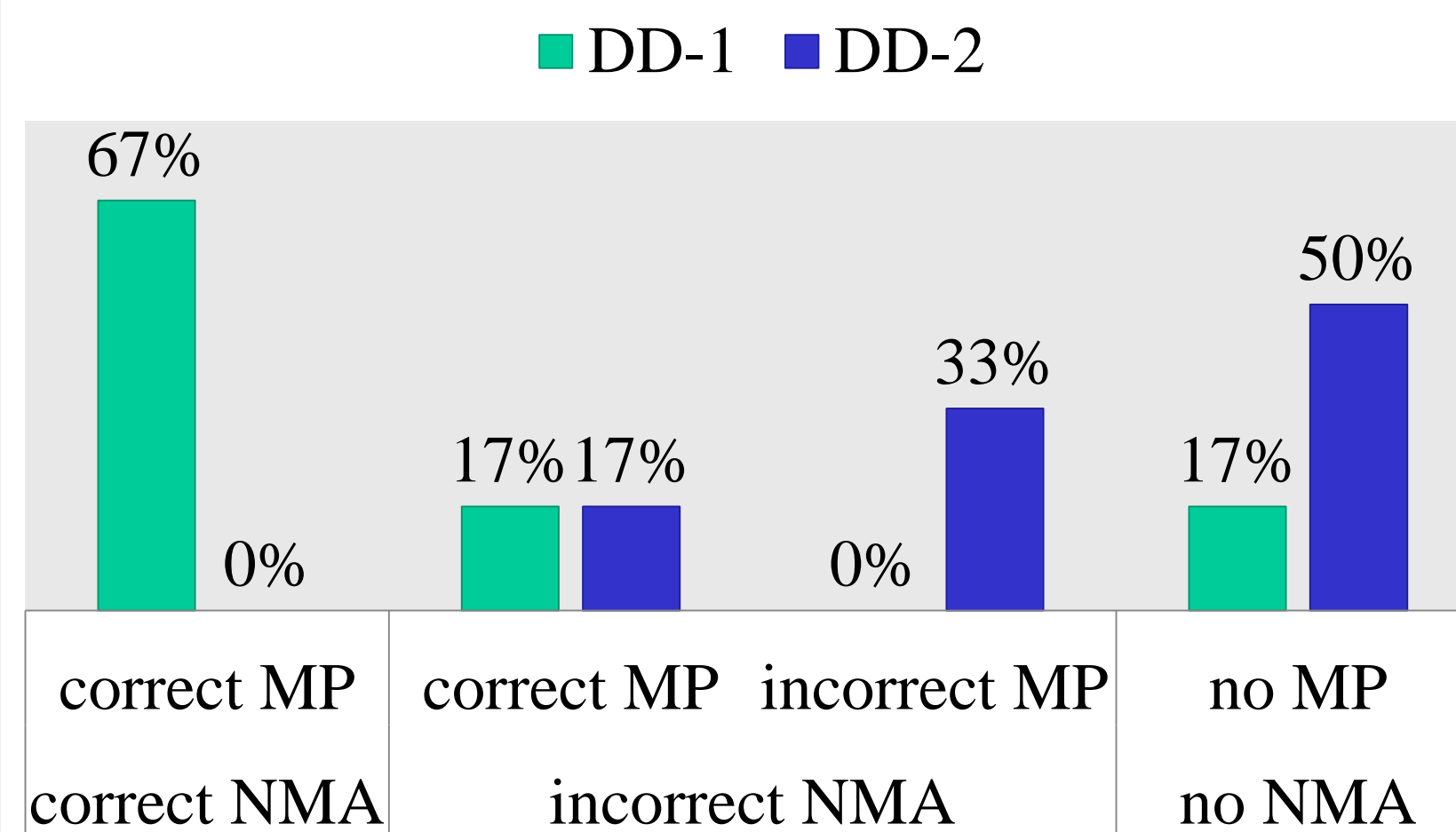
Video elicitation

Method

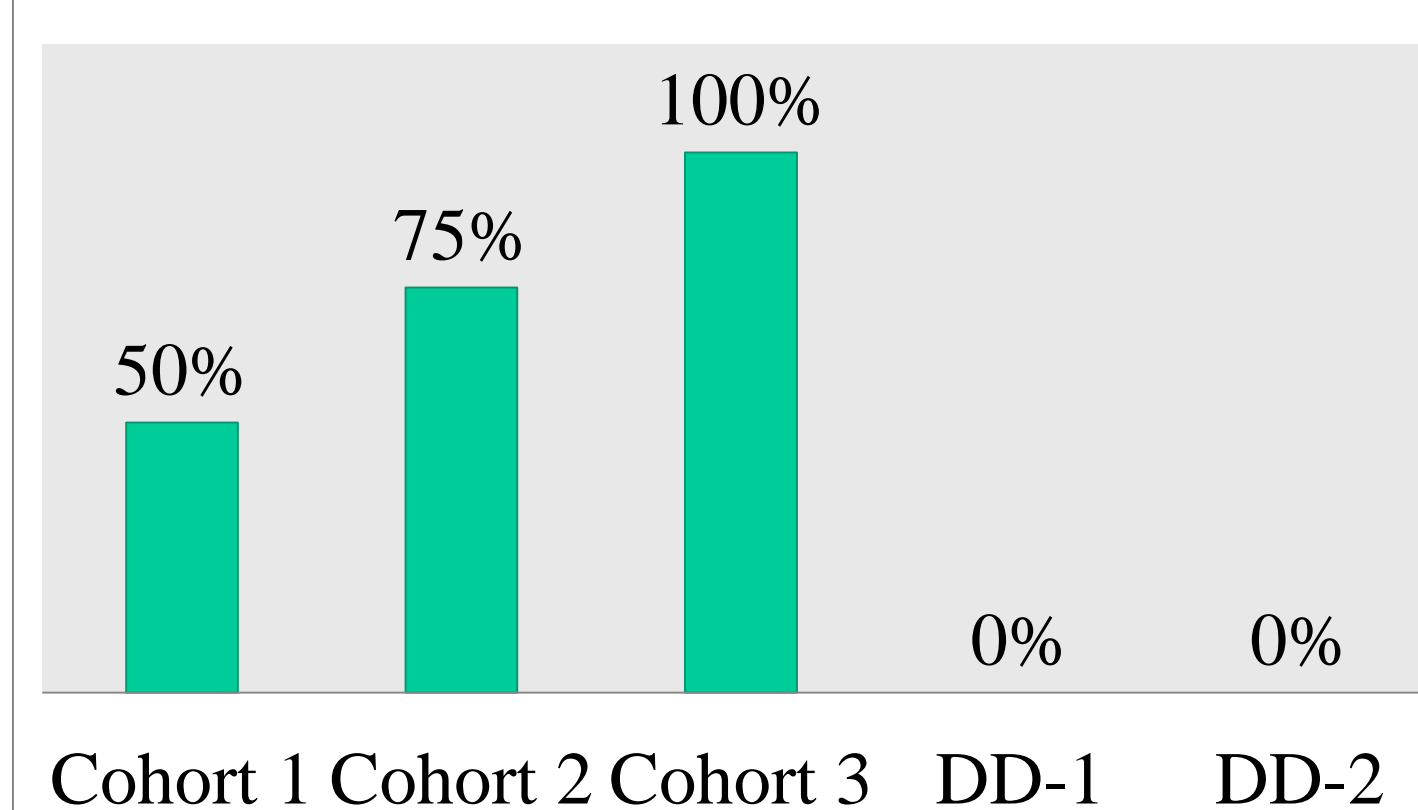
Overall accuracy by DH



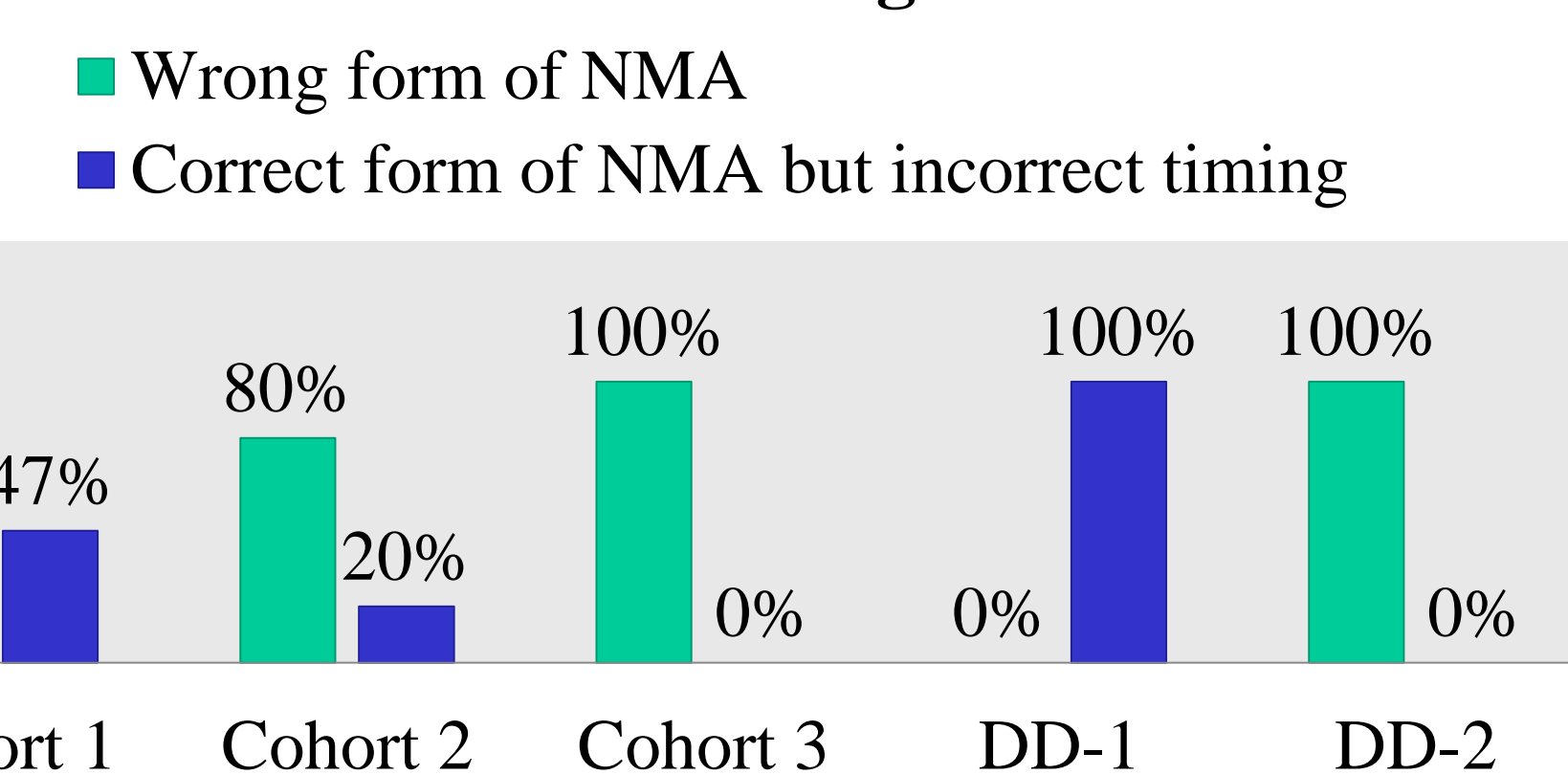
Overall accuracy by DD



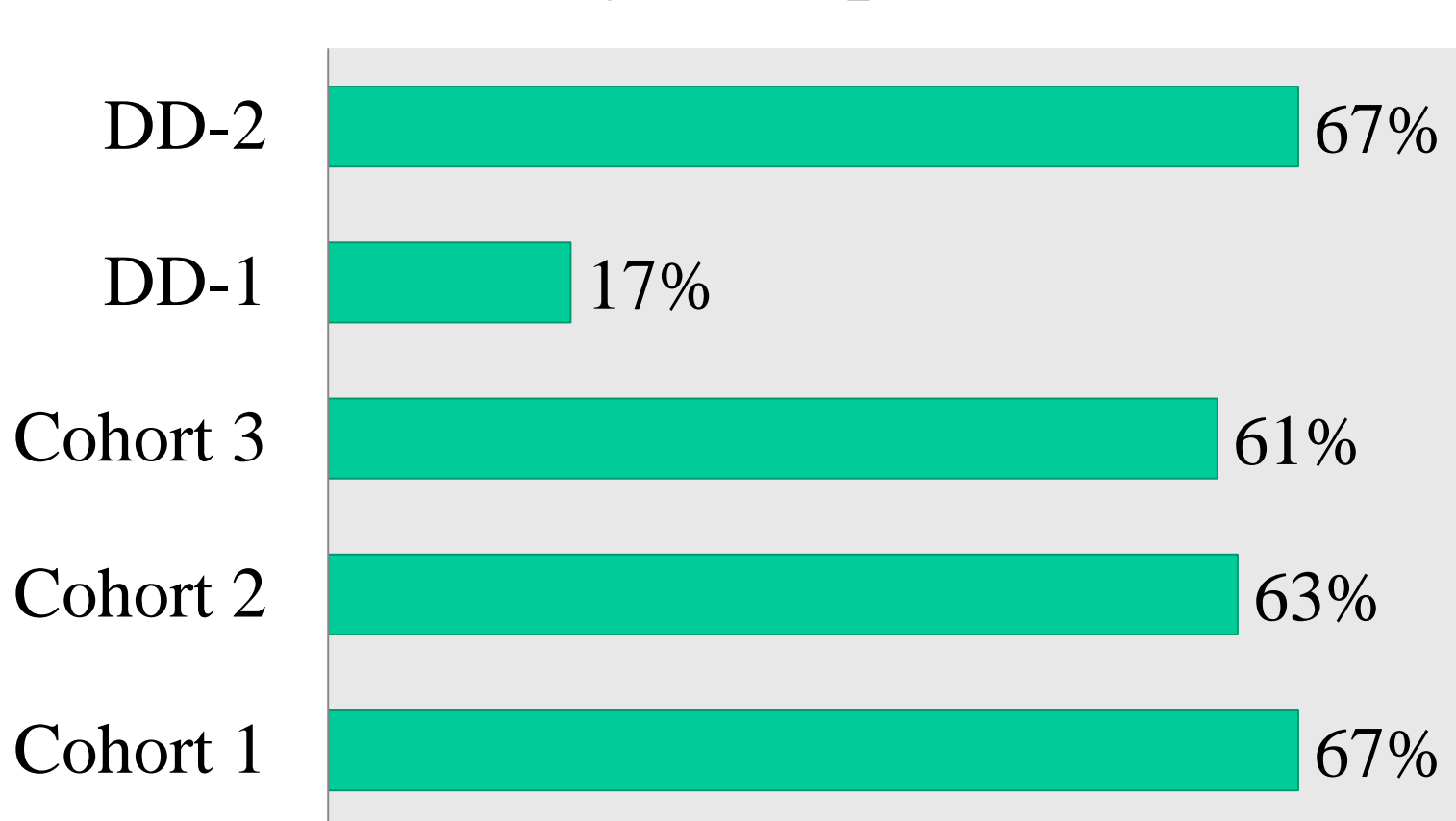
Presence of manual adverbs



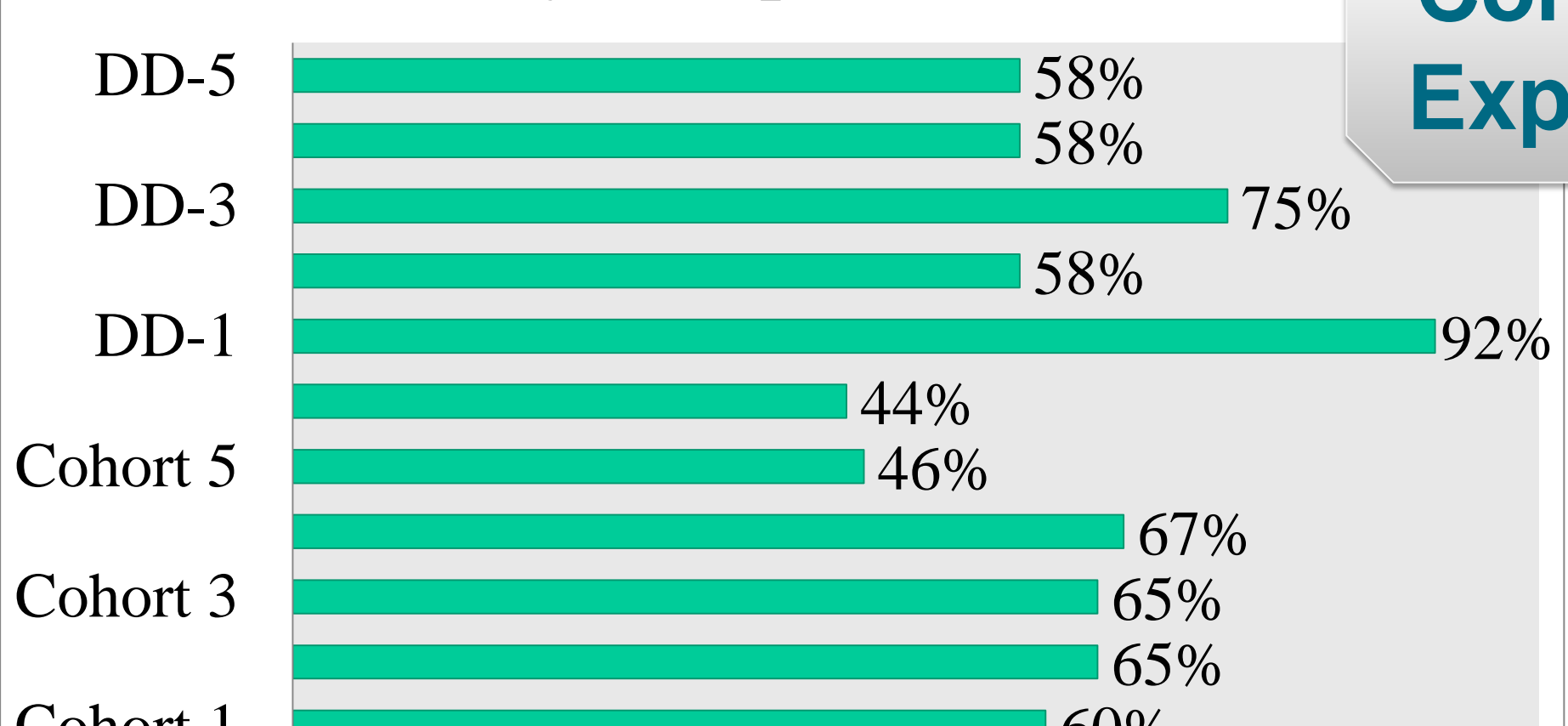
Errors concerning NMA



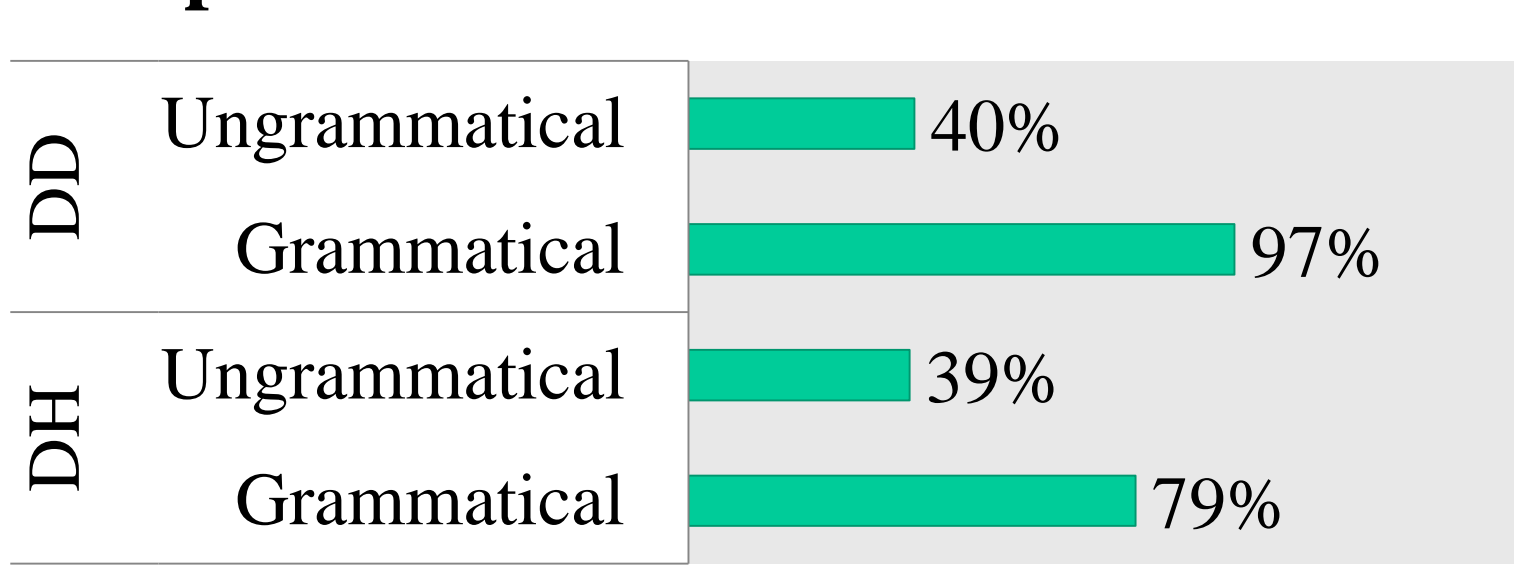
Overall accuracy in Experiment 1



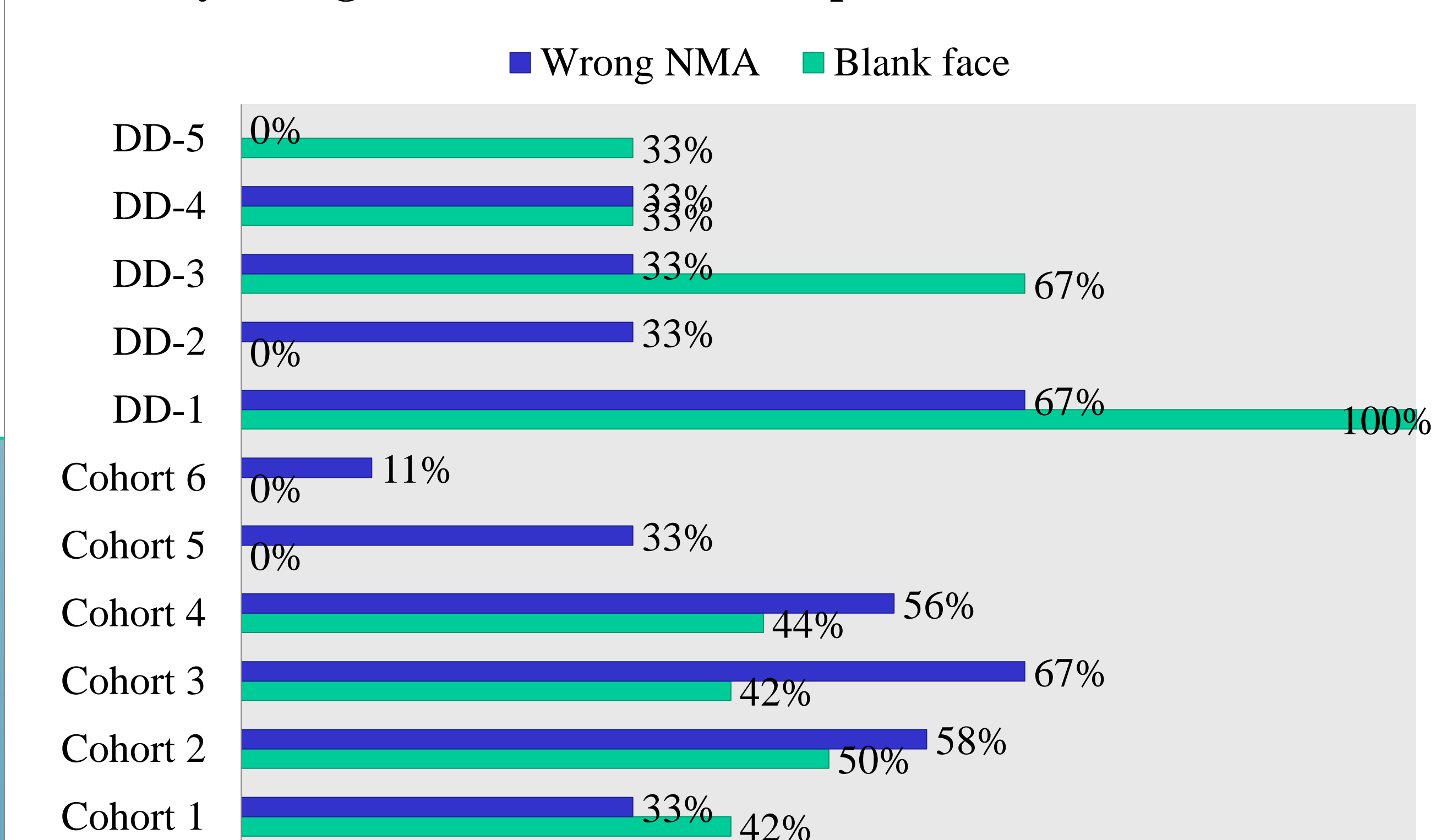
Overall accuracy in Experiment 2



Accuracy of grammatical & ungrammatical NMA in Experiment 2



Accuracy of ungrammatical NMA in Experiment 2



Concluding remarks

1) Developmental stages:

- Stage I: Do not have the knowledge of either MP or NMA
- Stage II: Learn the use of MP
- Stage III: Acquire the co-occurrence of MP and NMA
- Stage IV: Master the correct form and timing of NMA

2) Deaf participants who have more years of HKSL exposure performed better than those who have fewer years of HKSL exposure.

3) Generally DH and DD perform better on comprehension than production.

4) Instead of using NMA, DH may use manual adverbs co-occurring with manual predicates. However, DD did not use such strategy.

Acknowledgment

This study was supported by The Hong Kong Jockey Club and conducted as part of the Jockey Club Sign Bilingualism Co-Enrolment in Deaf Education Programme research in Hong Kong. We must also express our great gratitude to the deaf parents who participated in the research project and both Deaf and hearing research team members for their hard work on the test design, data collection and data transcription. Thanks also go to Prof. Gladys Tang and Prof. Felix Sze for their insightful comments on this paper.

References

- Anderson, D. E., & Reilly, J. (1999). PAH! The acquisition of adverbials in ASL. *Sign Language and Linguistics* 1-2, 1316-7249.
- Baker-Shenk, C. (1983). A microanalysis of the non-manual components of questions in American Sign Language (Doctoral dissertation). University of California, Berkeley.
- Baker-Shenk, C., & Cokely, D. (2002). *American Sign Language: A teacher's resource text on grammar and culture*. Silver Spring, MD: T.J. Publishers.
- Neidle, C., Kegl, J., MacLaughlin, D., Bahan, B., and Lee, R. G. (2000). *The syntax of American Sign Language: functional categories and hierarchical structure*. Cambridge, Mass.: MIT Press.
- Reilly, J. (2006). How faces come to serve grammar: the development of nonmanual morphology in American Sign Language. In B. Schick, M. Marschark & P. E. Spencer (Eds.), *Advances in the sign language development of deaf children* (pp. 262-290). Oxford: Oxford University Press.
- Reilly, J., & Anderson, D. (2002). The acquisition of non-manual morphology in ASL. In G. Morgan & B. Woll (Eds.), *Directions in sign language acquisition* (pp. 156-181). Amsterdam: John Benjamins.

Experiment 1

- ✓ 11 DH: 3 cohorts
 - ✧ Years of exposure to HKSL: 2;5 → 1;5 → 0;5
- ✓ 2 DD:
 - ✧ Years of exposure to HKSL: 6;10 → 5;9

Experiment 2

- ✓ 20 DH: 6 cohorts
 - ✧ Years of exposure to HKSL: 5;5 → 4;5 → 3;5 → 2;5 → 1;5 → 0;5
- ✓ 5 DD:
 - ✧ Years of exposure to HKSL: 9;9 → 8;9 → 7;1 → 6;11 → 5;4